

# Matthew Webber NEW PAINTINGS



For further information and hi-res images please contact me at [artist@matthewwebber.co.uk](mailto:artist@matthewwebber.co.uk)

Photograph © Jamie Stoker



+44 (0) 7958 608 968

[artist@matthewwebber.co.uk](mailto:artist@matthewwebber.co.uk)

[www.matthewwebber.uk](http://www.matthewwebber.uk)



# Introduction

I'm a London-based painter producing intricate and complex abstract artworks that have been exhibited throughout the UK and the US.

All artworks are available for purchase or rental. Please [contact me](#) for a rental quote.

Visit my website for further information or find me by clicking on the social media icons below.

Scroll to the end of the catalogue or click [here](#) to find my CV and more information about my work.

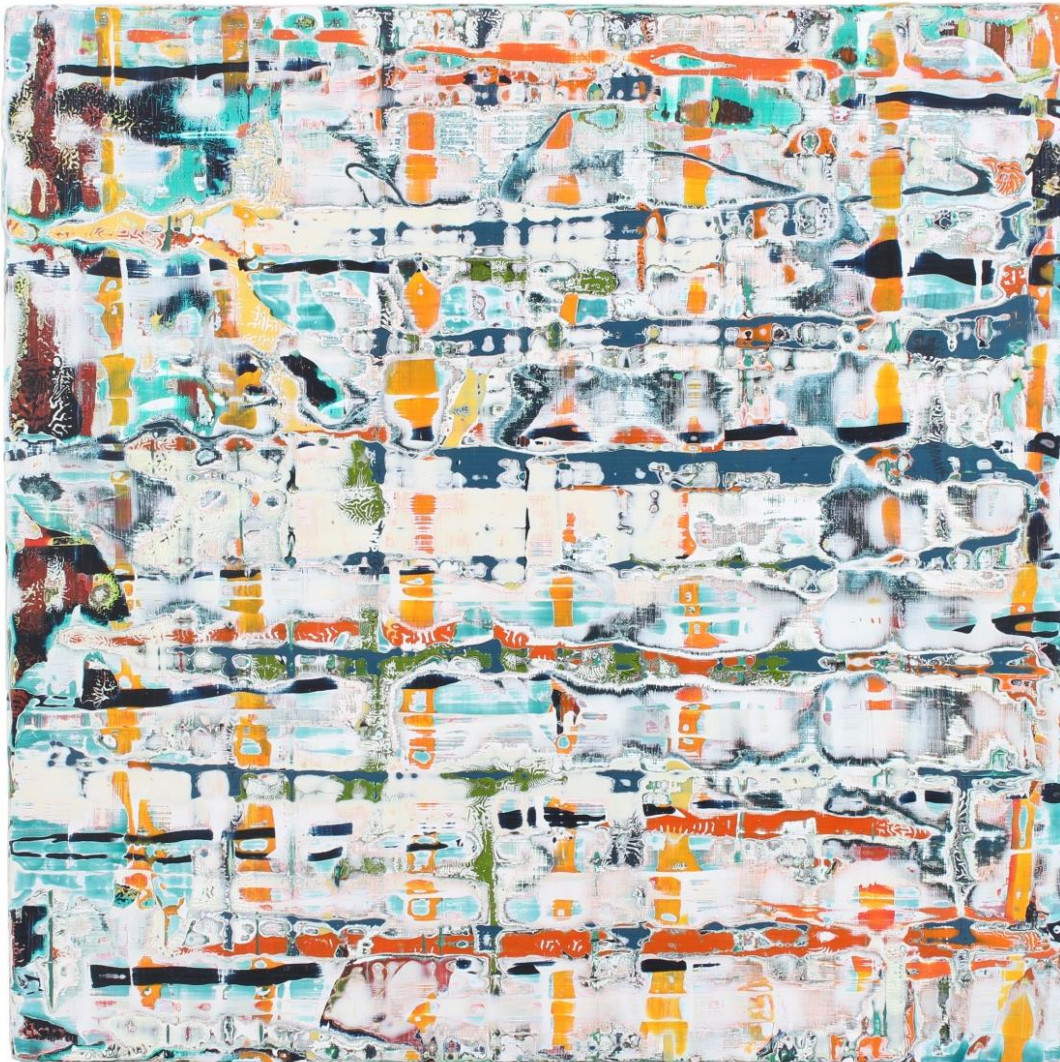


+44 (0) 7958 608 968

[artist@matthewwebber.co.uk](mailto:artist@matthewwebber.co.uk)

[www.matthewwebber.uk](http://www.matthewwebber.uk)





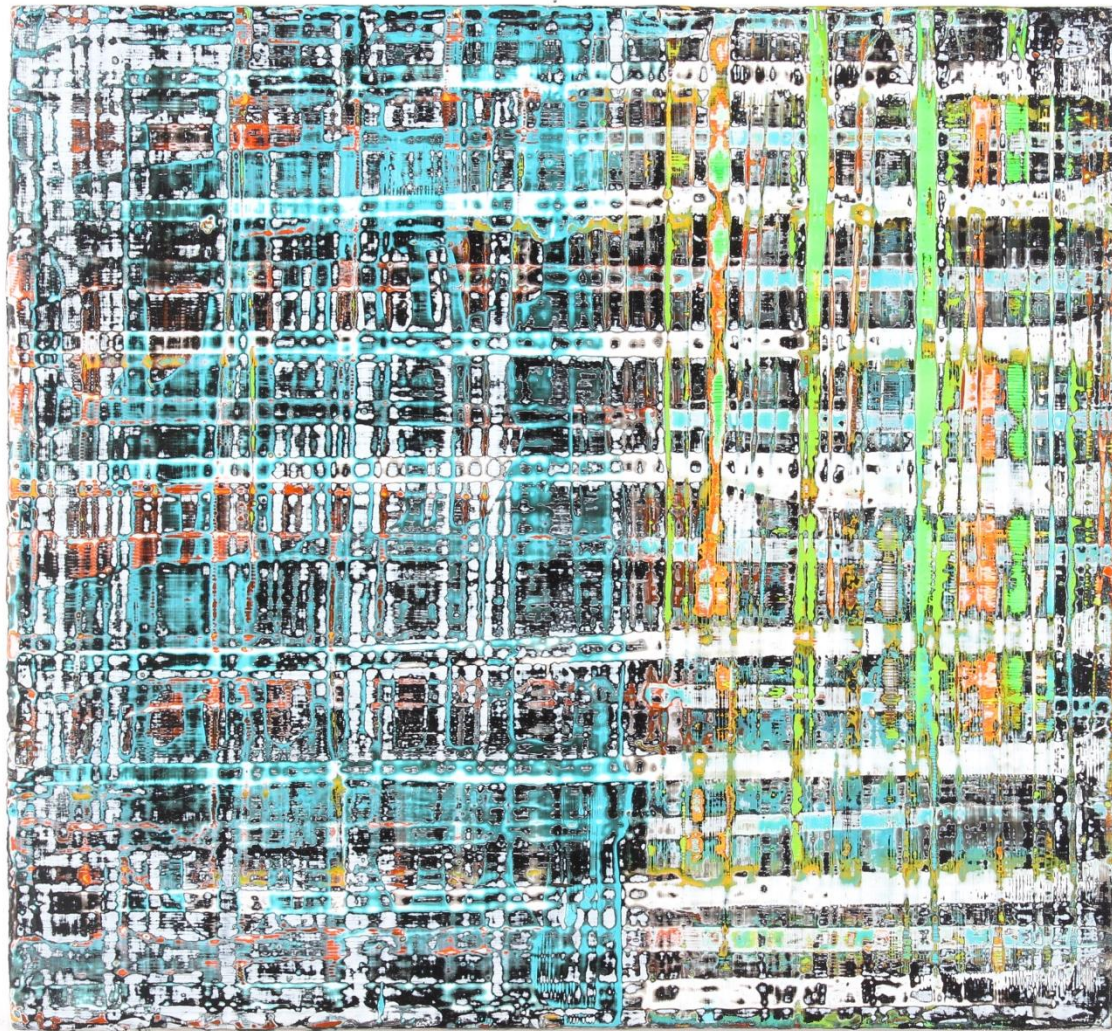
Shift II  
Oil and acrylic on canvas, 2018  
36 cm x 36 cm  
£980

+44 (0) 7958 608 968

[artist@matthewwebber.co.uk](mailto:artist@matthewwebber.co.uk)

[www.matthewwebber.uk](http://www.matthewwebber.uk)





Block II  
Oil and acrylic on canvas, 2023  
26 cm x 28 cm  
£800

+44 (0) 7958 608 968

[artist@matthewwebber.co.uk](mailto:artist@matthewwebber.co.uk)

[www.matthewwebber.uk](http://www.matthewwebber.uk)





Colour Study  
Oil and acrylic on wood, 2023  
20 cm x 25 cm  
£525

+44 (0) 7958 608 968

[artist@matthewwebber.co.uk](mailto:artist@matthewwebber.co.uk)

[www.matthewwebber.uk](http://www.matthewwebber.uk)





Forest Study I  
Oil and acrylic on wood, 2023  
20 cm x 25 cm  
£525

+44 (0) 7958 608 968

[artist@matthewwebber.co.uk](mailto:artist@matthewwebber.co.uk)

[www.matthewwebber.uk](http://www.matthewwebber.uk)





Forest Study II  
Oil and acrylic on wood, 2023  
20 cm x 25 cm  
£525

+44 (0) 7958 608 968

[artist@matthewwebber.co.uk](mailto:artist@matthewwebber.co.uk)

[www.matthewwebber.uk](http://www.matthewwebber.uk)





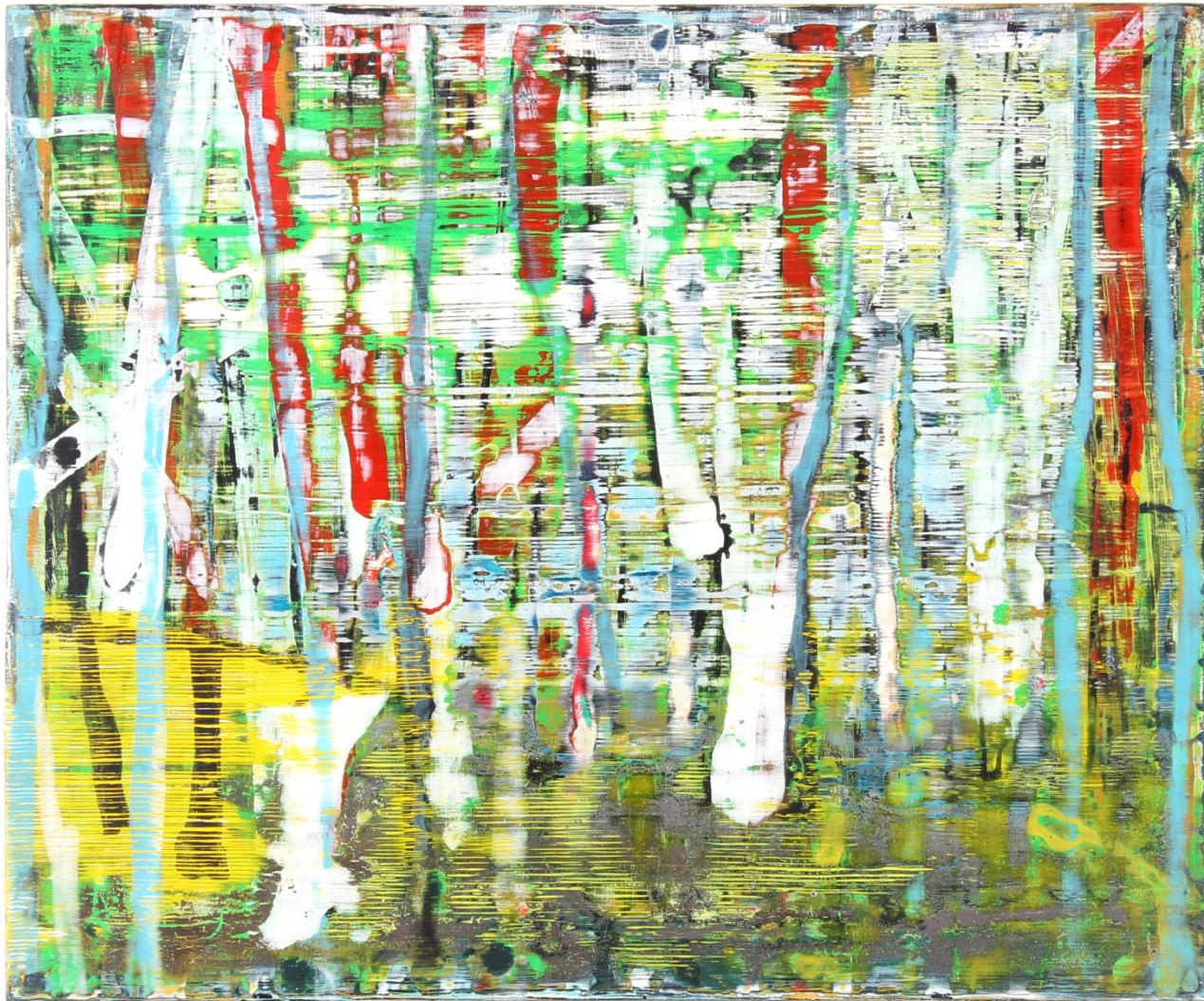
Forest Study III  
Oil and acrylic on wood, 2023  
20 cm x 25 cm  
£525

+44 (0) 7958 608 968

[artist@matthewwebber.co.uk](mailto:artist@matthewwebber.co.uk)

[www.matthewwebber.uk](http://www.matthewwebber.uk)





Forest Study IV  
Oil and acrylic on wood, 2023  
20 cm x 25 cm  
£525

+44 (0) 7958 608 968

[artist@matthewwebber.co.uk](mailto:artist@matthewwebber.co.uk)

[www.matthewwebber.uk](http://www.matthewwebber.uk)





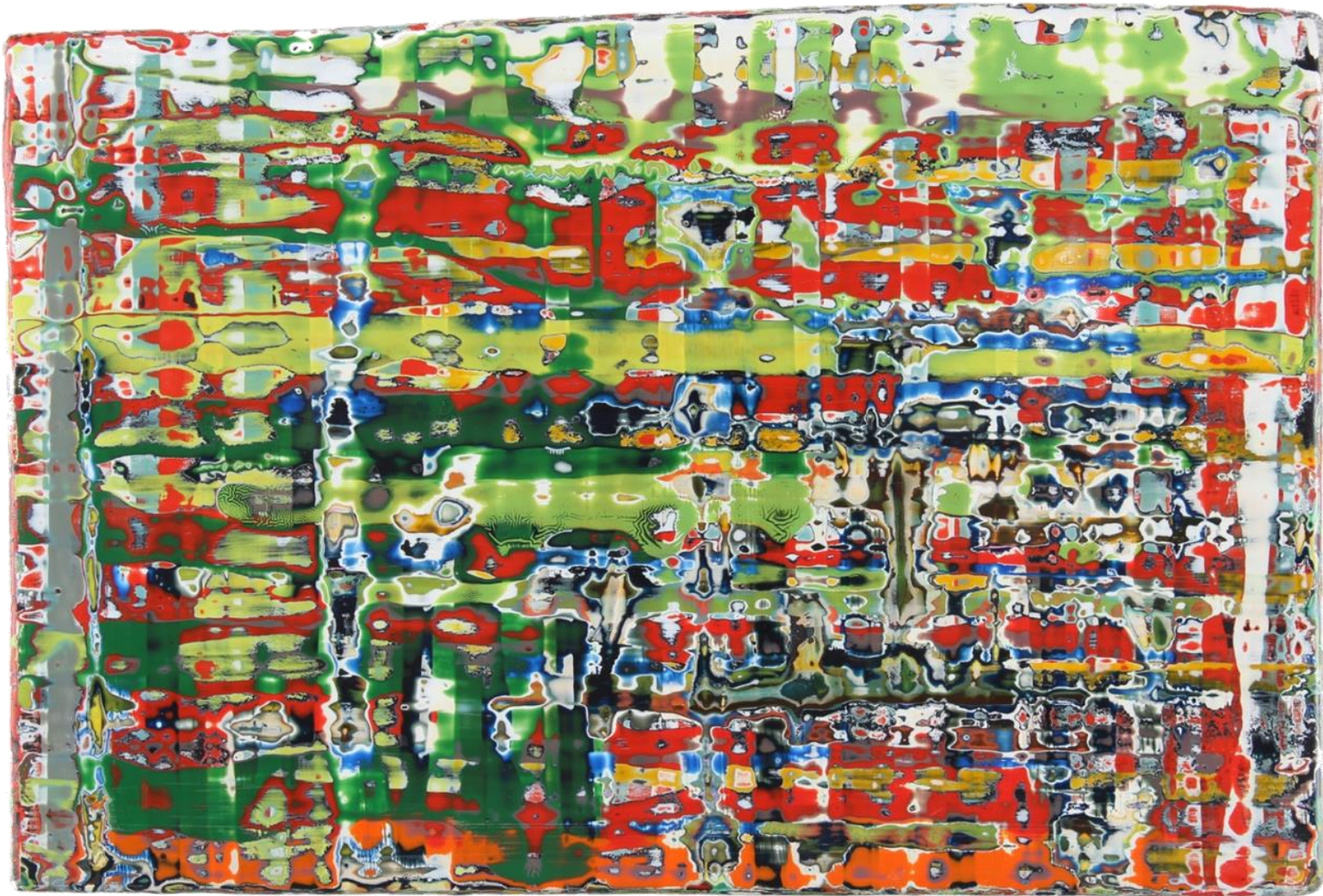
Loop  
Oil and acrylic on board, 2019  
28 cm x 28 cm  
£825

+44 (0) 7958 608 968

[artist@matthewwebber.co.uk](mailto:artist@matthewwebber.co.uk)

[www.matthewwebber.uk](http://www.matthewwebber.uk)





Scorch  
Oil and acrylic on canvas, 2019  
20 cm x 29 cm  
£650 (unframed)

+44 (0) 7958 608 968

[artist@matthewwebber.co.uk](mailto:artist@matthewwebber.co.uk)

[www.matthewwebber.uk](http://www.matthewwebber.uk)





Peninsula III  
Oil and acrylic on plywood, 2019  
36 cm x 25 cm  
£880

+44 (0) 7958 608 968  
[artist@matthewwebber.co.uk](mailto:artist@matthewwebber.co.uk)  
[www.matthewwebber.uk](http://www.matthewwebber.uk)





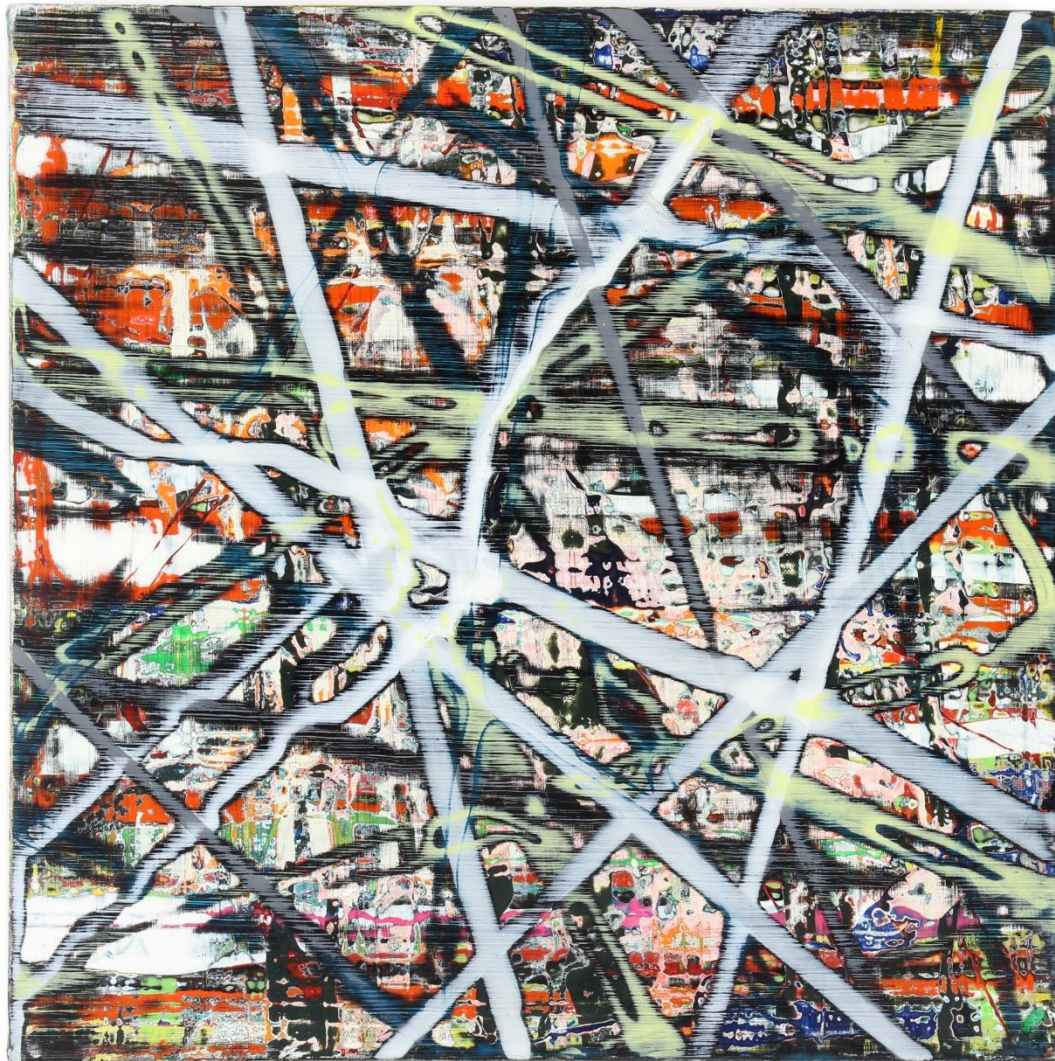
Lost  
Oil and acrylic on canvas, 2019  
33 cm x 33 cm  
£900

+44 (0) 7958 608 968

[artist@matthewwebber.co.uk](mailto:artist@matthewwebber.co.uk)

[www.matthewwebber.uk](http://www.matthewwebber.uk)





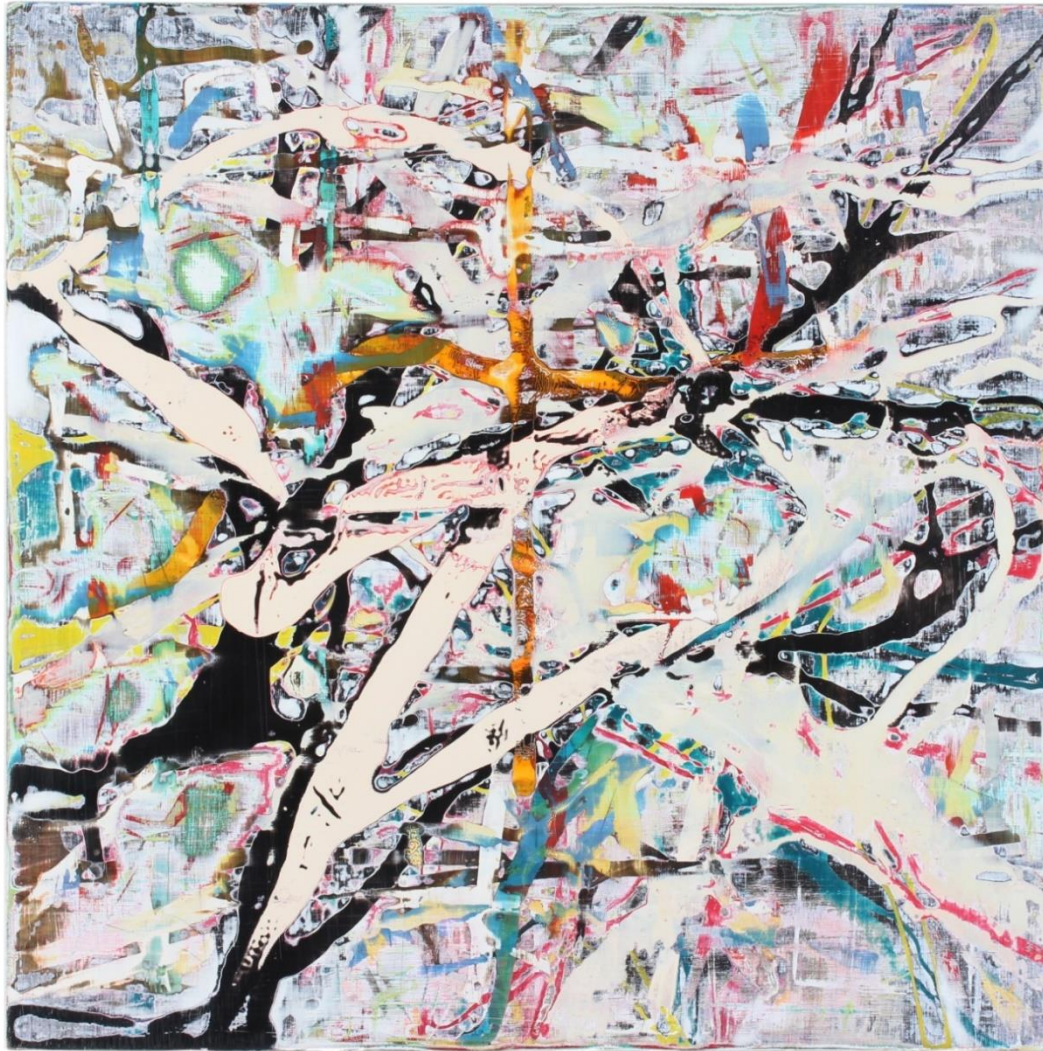
Network V  
Oil and acrylic on canvas, 2023  
33 cm x 33 cm  
£900

+44 (0) 7958 608 968

[artist@matthewwebber.co.uk](mailto:artist@matthewwebber.co.uk)

[www.matthewwebber.uk](http://www.matthewwebber.uk)





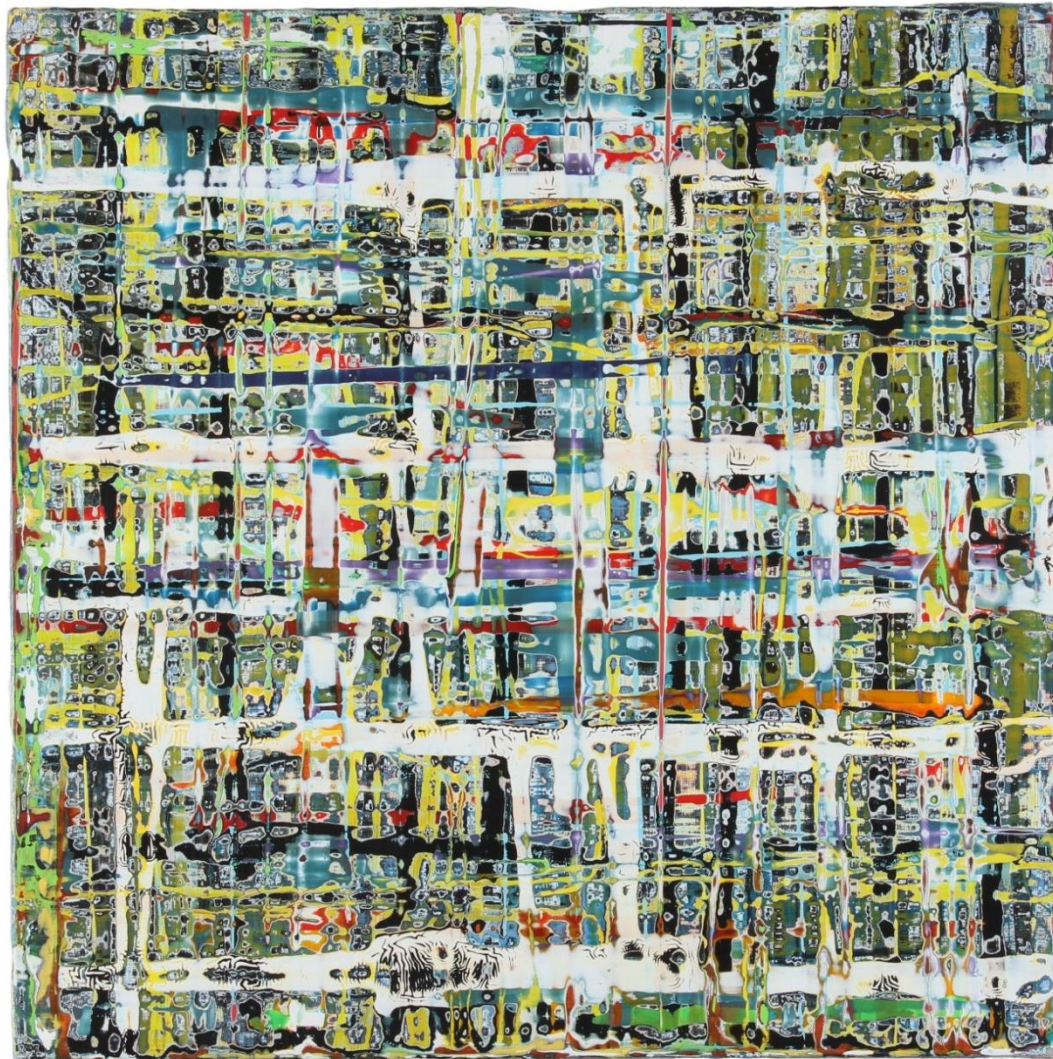
Intersection  
Oil and acrylic on MDF, 2019  
30 cm x 30 cm  
£875

+44 (0) 7958 608 968

[artist@matthewwebber.co.uk](mailto:artist@matthewwebber.co.uk)

[www.matthewwebber.uk](http://www.matthewwebber.uk)





Night  
Oil and acrylic on canvas, 2019  
33 cm x 33 cm  
£900

+44 (0) 7958 608 968

[artist@matthewwebber.co.uk](mailto:artist@matthewwebber.co.uk)

[www.matthewwebber.uk](http://www.matthewwebber.uk)





Tilt  
Oil and acrylic on plywood, 2019  
20 cm x 20 cm  
£495

+44 (0) 7958 608 968

[artist@matthewwebber.co.uk](mailto:artist@matthewwebber.co.uk)

[www.matthewwebber.uk](http://www.matthewwebber.uk)





Quarry  
Oil and acrylic on canvas, 2019  
25 cm x 25 cm  
£725

+44 (0) 7958 608 968

[artist@matthewwebber.co.uk](mailto:artist@matthewwebber.co.uk)

[www.matthewwebber.uk](http://www.matthewwebber.uk)





Canopy  
Oil and acrylic on canvas, 2021  
30 cm x 30 cm  
£875

+44 (0) 7958 608 968

[artist@matthewwebber.co.uk](mailto:artist@matthewwebber.co.uk)

[www.matthewwebber.uk](http://www.matthewwebber.uk)





Reef IV  
Oil and acrylic on canvas, 2021  
50 cm x 50 cm  
£1600

+44 (0) 7958 608 968

[artist@matthewwebber.co.uk](mailto:artist@matthewwebber.co.uk)

[www.matthewwebber.uk](http://www.matthewwebber.uk)





Runway  
Oil and acrylic on plywood, 2023  
50 cm x 50 cm  
£1700

+44 (0) 7958 608 968

[artist@matthewwebber.co.uk](mailto:artist@matthewwebber.co.uk)

[www.matthewwebber.uk](http://www.matthewwebber.uk)





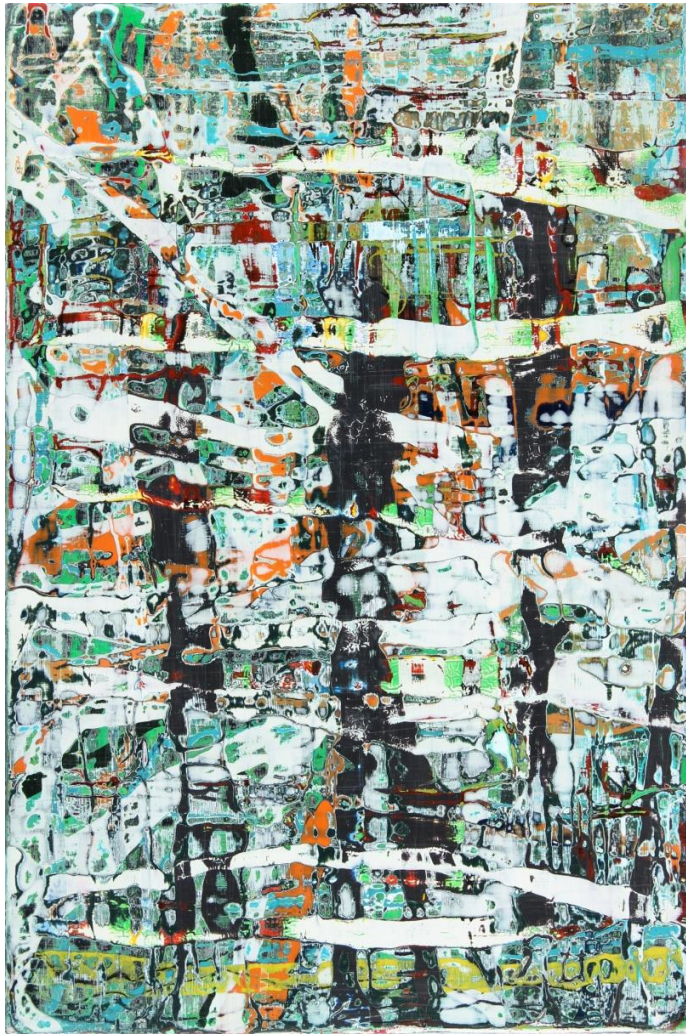
Flight Path II  
Oil and acrylic on plywood, 2023  
54 cm x 54 cm  
£1700

+44 (0) 7958 608 968

[artist@matthewwebber.co.uk](mailto:artist@matthewwebber.co.uk)

[www.matthewwebber.uk](http://www.matthewwebber.uk)





The Retreat (BGW0916)  
Oil and acrylic on canvas, 2016  
30 cm x 20 cm  
£750

+44 (0) 7958 608 968  
[artist@matthewwebber.co.uk](mailto:artist@matthewwebber.co.uk)  
[www.matthewwebber.uk](http://www.matthewwebber.uk)





Golden II (YGW0816)  
Oil and acrylic on canvas, 2016  
35 cm x 35 cm  
£980

+44 (0) 7958 608 968

[artist@matthewwebber.co.uk](mailto:artist@matthewwebber.co.uk)

[www.matthewwebber.uk](http://www.matthewwebber.uk)





Plexus Revisited  
Oil and acrylic on canvas, 2023  
93 cm x 93 cm  
£2900

+44 (0) 7958 608 968

[artist@matthewwebber.co.uk](mailto:artist@matthewwebber.co.uk)

[www.matthewwebber.uk](http://www.matthewwebber.uk)





Candy  
Oil and acrylic on plywood, 2023  
39 cm x 39 cm  
£1050

+44 (0) 7958 608 968

[artist@matthewwebber.co.uk](mailto:artist@matthewwebber.co.uk)

[www.matthewwebber.uk](http://www.matthewwebber.uk)





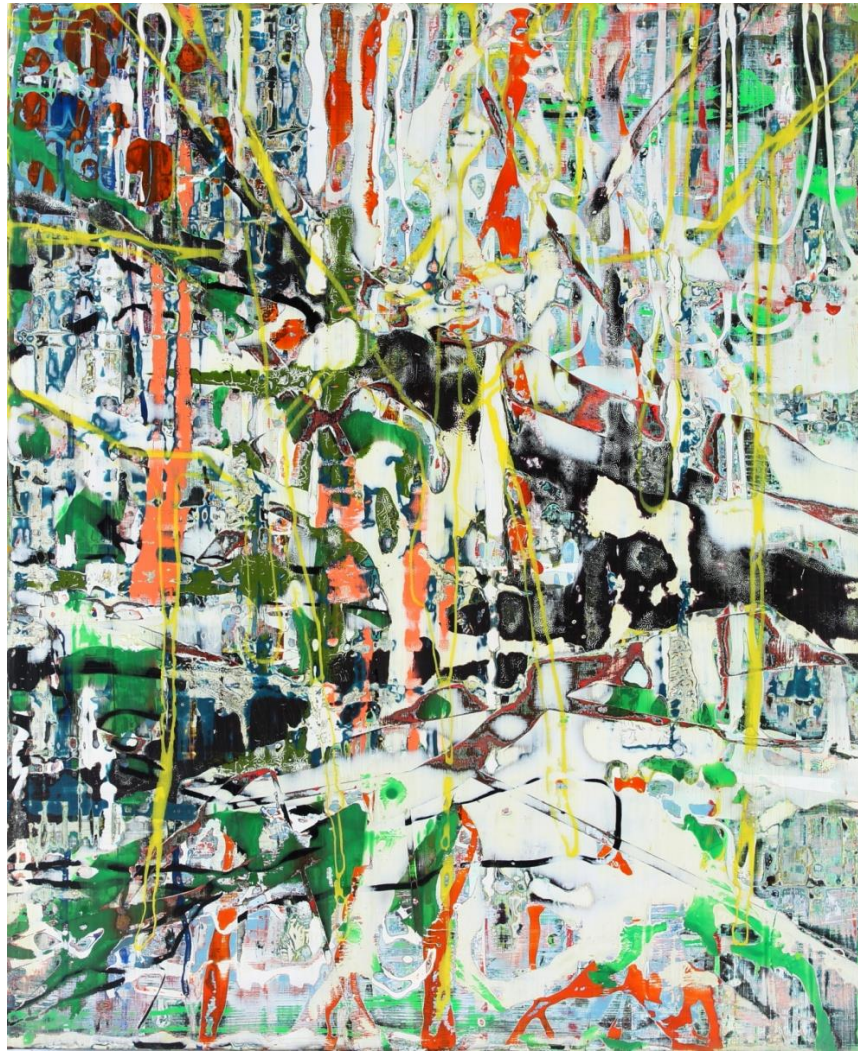
Pathway II  
Oil and acrylic on plywood, 2023  
42 cm x 42 cm  
£1100

+44 (0) 7958 608 968

[artist@matthewwebber.co.uk](mailto:artist@matthewwebber.co.uk)

[www.matthewwebber.uk](http://www.matthewwebber.uk)





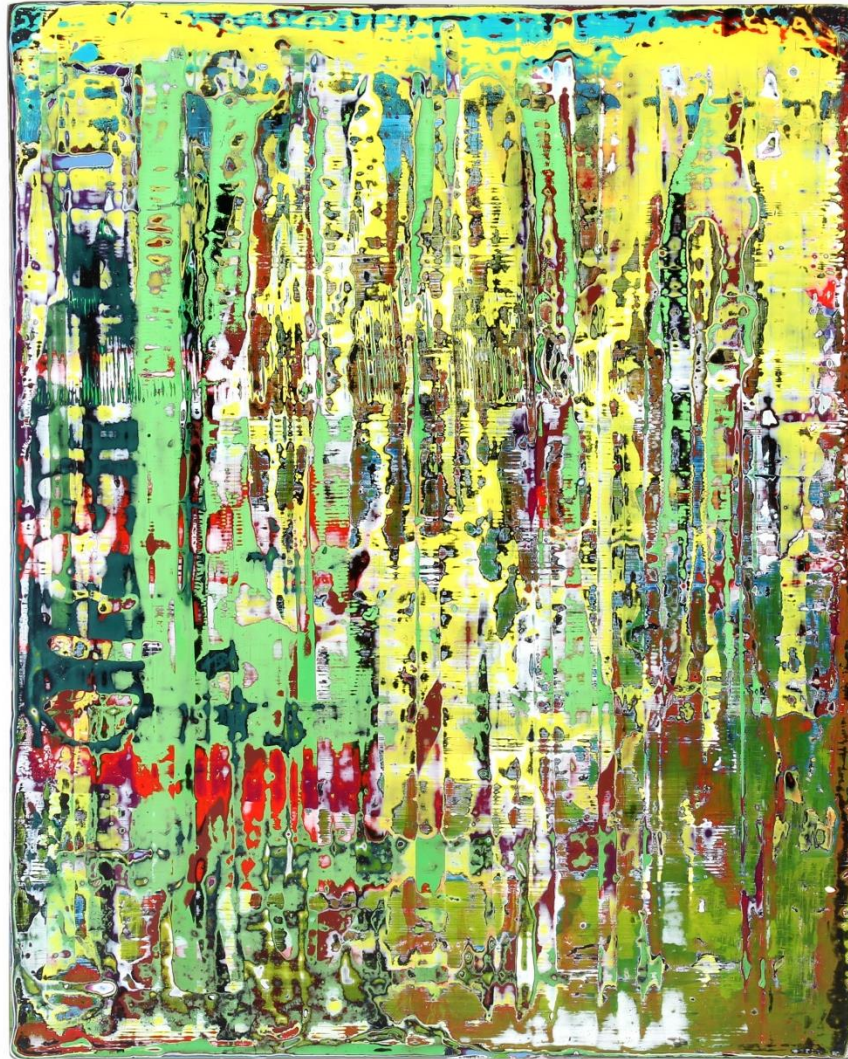
Plastic Trees  
Oil and acrylic on canvas, 2016  
45 cm x 37 cm  
£1050

+44 (0) 7958 608 968

[artist@matthewwebber.co.uk](mailto:artist@matthewwebber.co.uk)

[www.matthewwebber.uk](http://www.matthewwebber.uk)





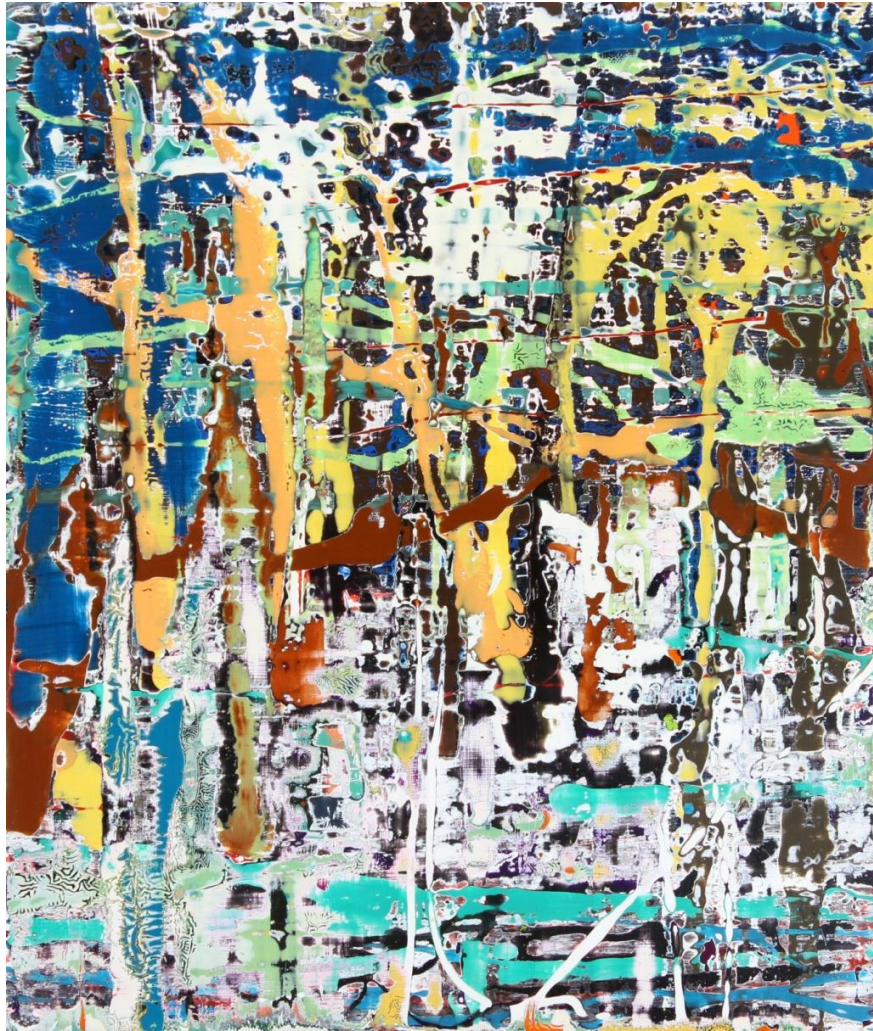
Evergreen  
Oil and acrylic on plywood, 2023  
34 cm x 27 cm  
£900

+44 (0) 7958 608 968

[artist@matthewwebber.co.uk](mailto:artist@matthewwebber.co.uk)

[www.matthewwebber.uk](http://www.matthewwebber.uk)





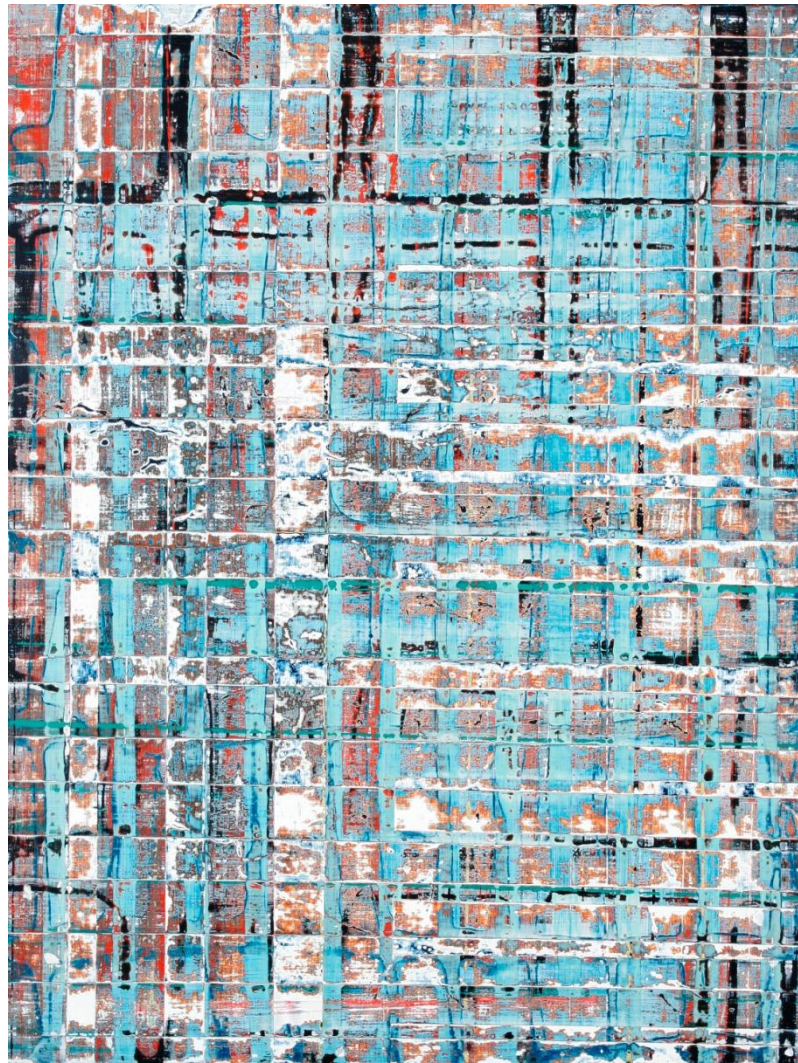
Winter (TBB0216)  
Oil and acrylic on canvas, 2016  
35 cm x 30 cm  
£900

+44 (0) 7958 608 968

[artist@matthewwebber.co.uk](mailto:artist@matthewwebber.co.uk)

[www.matthewwebber.uk](http://www.matthewwebber.uk)





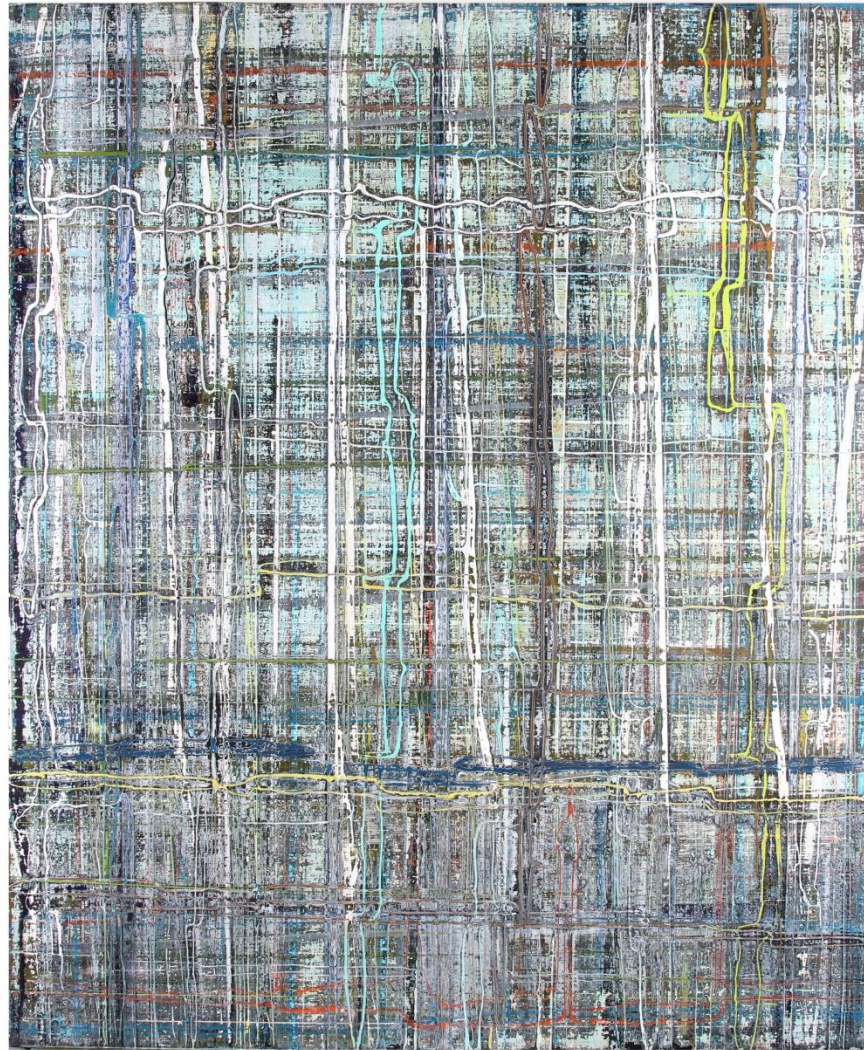
Block (BRX1015)  
Oil and acrylic on plywood, 2015  
39 cm x 30 cm  
£950

+44 (0) 7958 608 968

[artist@matthewwebber.co.uk](mailto:artist@matthewwebber.co.uk)

[www.matthewwebber.uk](http://www.matthewwebber.uk)





Wave I  
Oil and acrylic on canvas, 2023  
116 cm x 100 cm  
£3900 (unframed)

+44 (0) 7958 608 968

[artist@matthewwebber.co.uk](mailto:artist@matthewwebber.co.uk)

[www.matthewwebber.uk](http://www.matthewwebber.uk)





Element (BCY0918)  
Oil and acrylic on canvas, 2018  
100 cm x 142 cm  
£2900 (unframed)

+44 (0) 7958 608 968

[artist@matthewwebber.co.uk](mailto:artist@matthewwebber.co.uk)

[www.matthewwebber.uk](http://www.matthewwebber.uk)

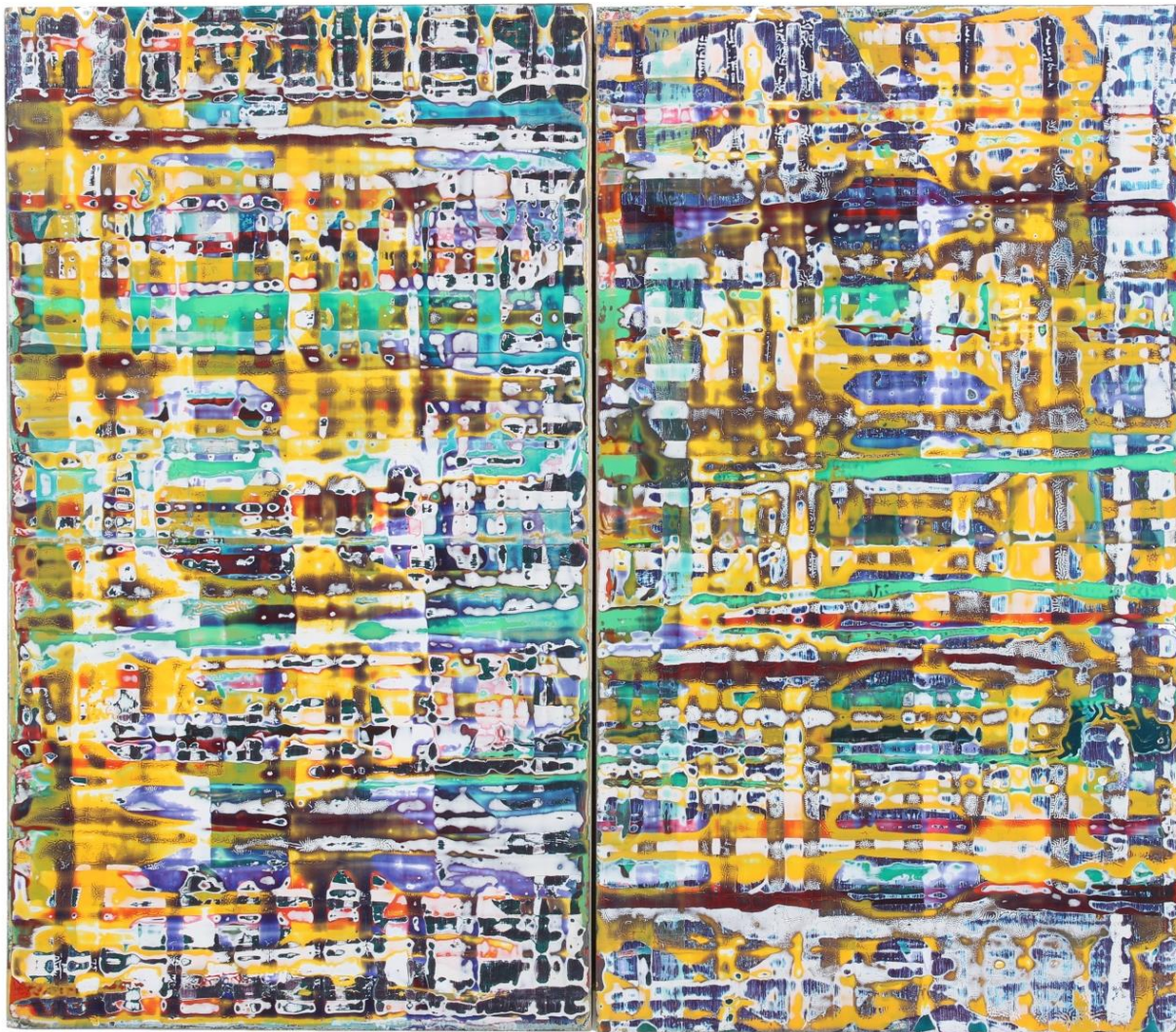




River  
Oil and acrylic on plywood, 2018  
24 cm x 33 cm  
£850

+44 (0) 7958 608 968  
[artist@matthewwebber.co.uk](mailto:artist@matthewwebber.co.uk)  
[www.matthewwebber.uk](http://www.matthewwebber.uk)





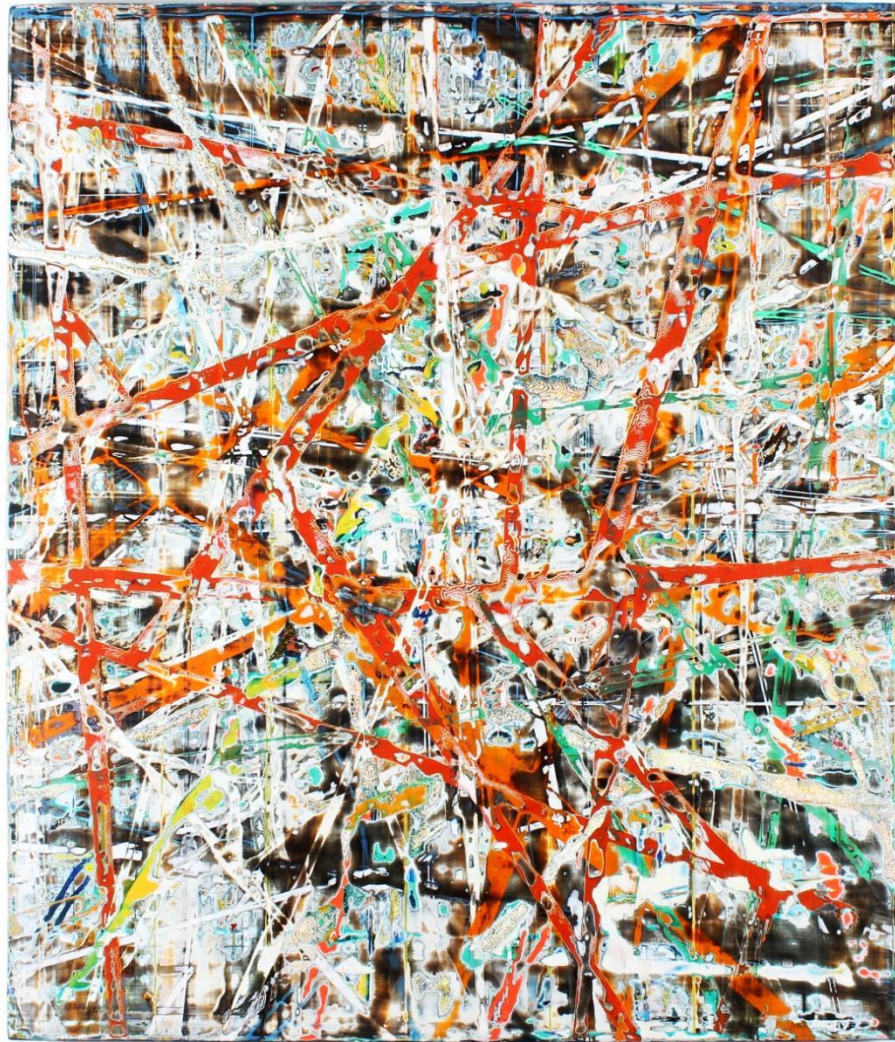
Out and Back  
Oil and acrylic on plywood, 2 panels 2018  
30 cm x 34 cm  
£900

+44 (0) 7958 608 968

[artist@matthewwebber.co.uk](mailto:artist@matthewwebber.co.uk)

[www.matthewwebber.uk](http://www.matthewwebber.uk)





Forest Floor  
Oil and acrylic on canvas, 2020  
80 cm x 69 cm  
£2300

+44 (0) 7958 608 968

[artist@matthewwebber.co.uk](mailto:artist@matthewwebber.co.uk)

[www.matthewwebber.uk](http://www.matthewwebber.uk)





Aerial IV  
Oil and acrylic on plywood, 2020  
30 cm x 30 cm  
£875

+44 (0) 7958 608 968

[artist@matthewwebber.co.uk](mailto:artist@matthewwebber.co.uk)

[www.matthewwebber.uk](http://www.matthewwebber.uk)





Cut Out II  
Oil and acrylic on plywood, 2019  
30 cm x 26 cm  
£750 (unframed)

+44 (0) 7958 608 968

[artist@matthewwebber.co.uk](mailto:artist@matthewwebber.co.uk)

[www.matthewwebber.uk](http://www.matthewwebber.uk)





Pathway  
Oil and acrylic on plywood, 2022  
40 cm x 40 cm  
£1050

+44 (0) 7958 608 968

[artist@matthewwebber.co.uk](mailto:artist@matthewwebber.co.uk)

[www.matthewwebber.uk](http://www.matthewwebber.uk)





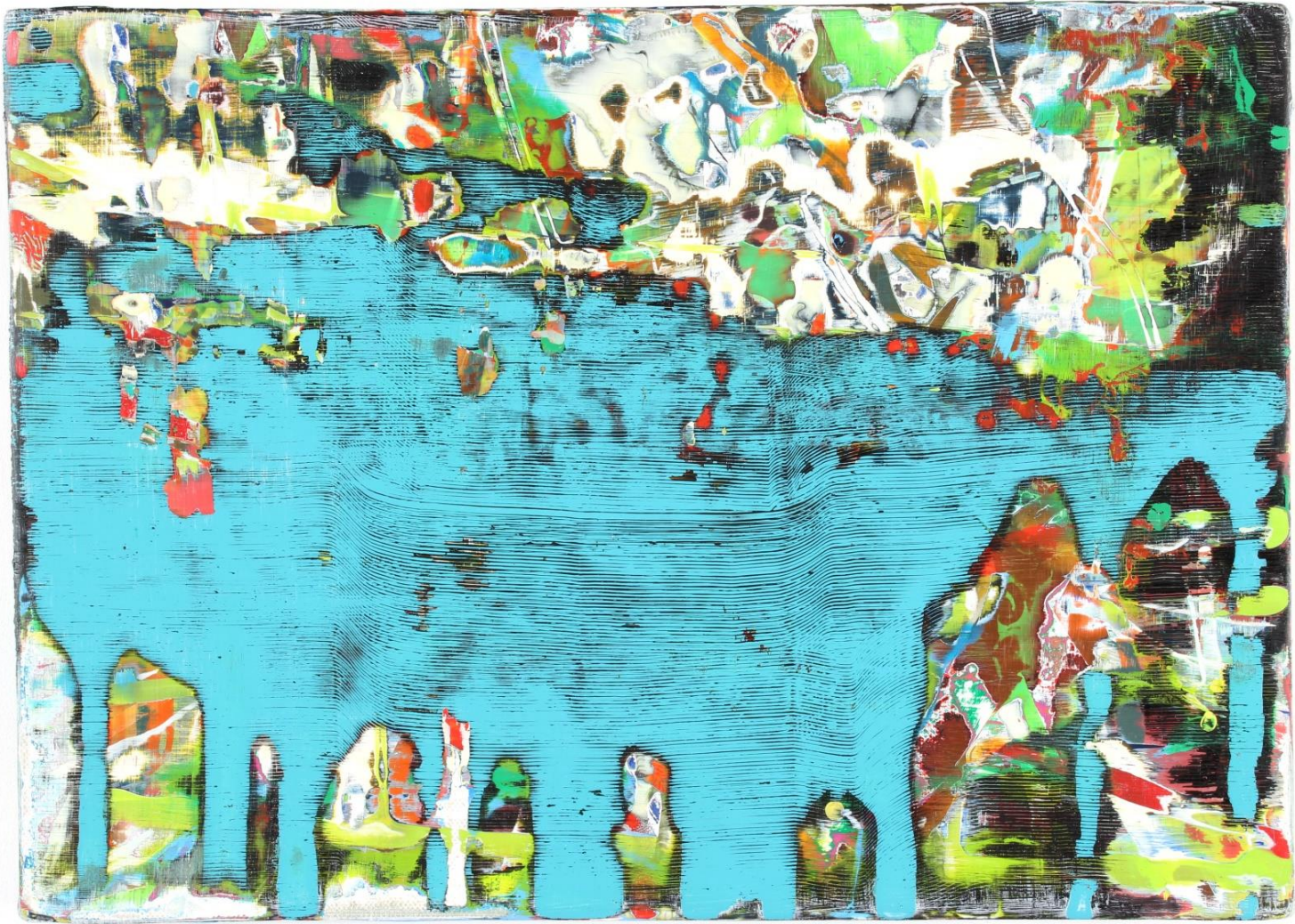
Fragment  
Oil and acrylic on plywood, 2022  
32 cm x 32 cm  
£900

+44 (0) 7958 608 968

[artist@matthewwebber.co.uk](mailto:artist@matthewwebber.co.uk)

[www.matthewwebber.uk](http://www.matthewwebber.uk)





Pool II  
Oil and acrylic on canvas, 2022  
22 cm x 30 cm  
£725

+44 (0) 7958 608 968

[artist@matthewwebber.co.uk](mailto:artist@matthewwebber.co.uk)

[www.matthewwebber.uk](http://www.matthewwebber.uk)





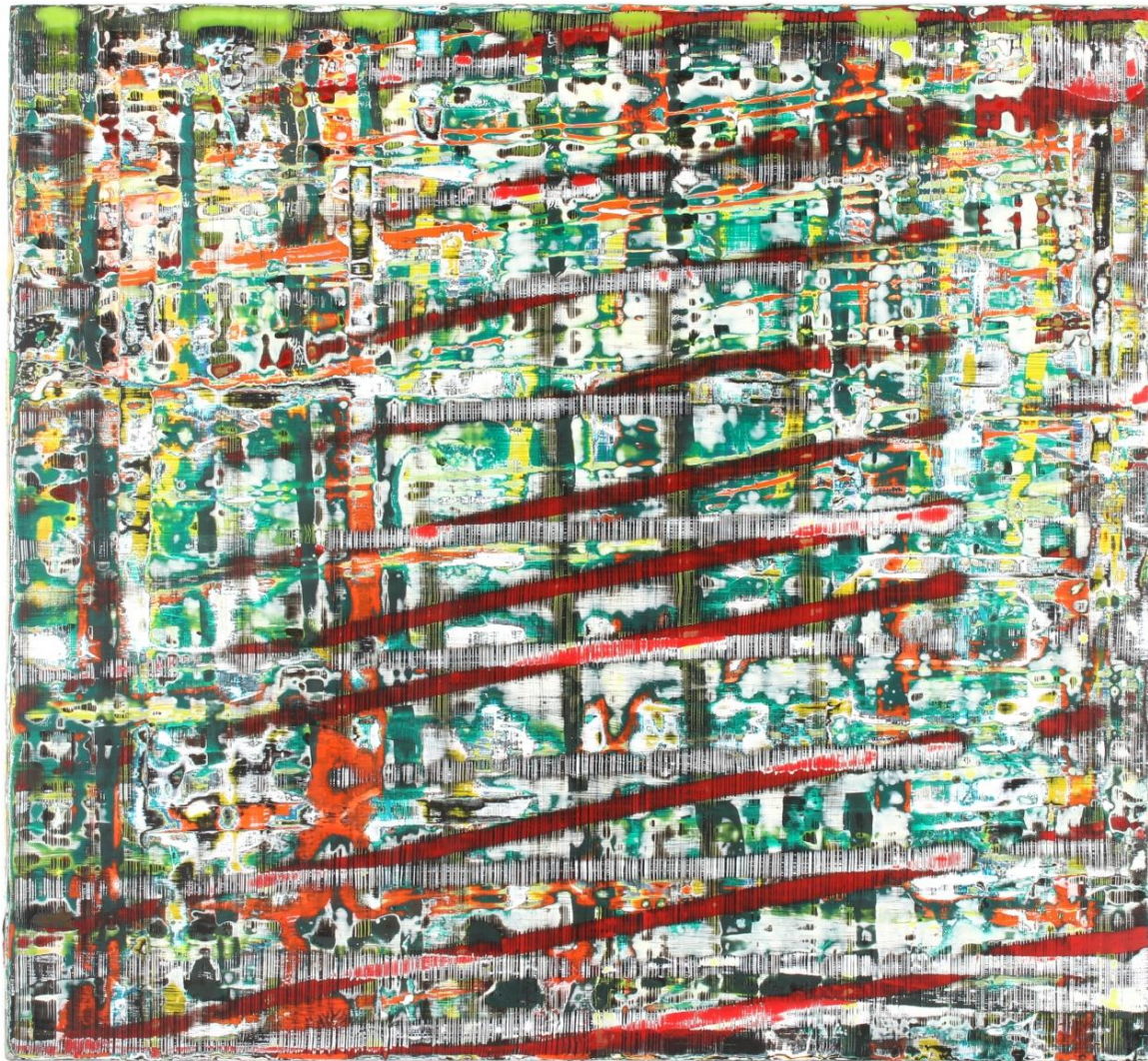
Splinter  
Oil and acrylic on plywood, 2022  
39 cm x 44 cm  
£1250

+44 (0) 7958 608 968

[artist@matthewwebber.co.uk](mailto:artist@matthewwebber.co.uk)

[www.matthewwebber.uk](http://www.matthewwebber.uk)





Screen  
Oil and acrylic on plywood, 2022  
32 cm x 34 cm  
£900

+44 (0) 7958 608 968

[artist@matthewwebber.co.uk](mailto:artist@matthewwebber.co.uk)

[www.matthewwebber.uk](http://www.matthewwebber.uk)





Wood Land  
Oil and acrylic on oak panel, 2022  
15 cm x 20 cm x 5 cm  
£650 (unframed)

+44 (0) 7958 608 968

[artist@matthewwebber.co.uk](mailto:artist@matthewwebber.co.uk)

[www.matthewwebber.uk](http://www.matthewwebber.uk)





Mainline  
Oil and acrylic on plywood, 2022  
21 cm x 30 cm  
£725

+44 (0) 7958 608 968

[artist@matthewwebber.co.uk](mailto:artist@matthewwebber.co.uk)

[www.matthewwebber.uk](http://www.matthewwebber.uk)





Cold Coast  
Oil and acrylic on canvas, 2012  
50 cm x 50 cm  
£1400

+44 (0) 7958 608 968

[artist@matthewwebber.co.uk](mailto:artist@matthewwebber.co.uk)

[www.matthewwebber.uk](http://www.matthewwebber.uk)





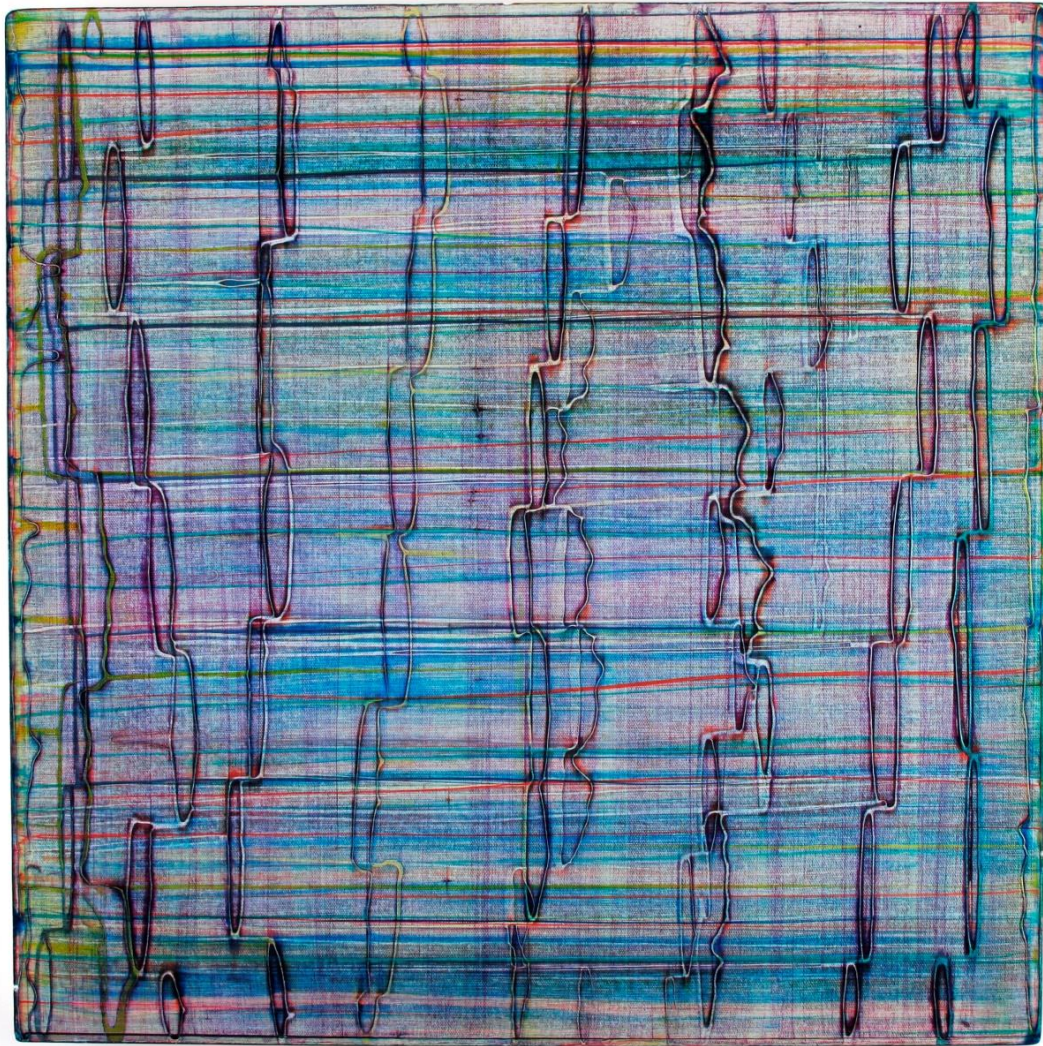
Reef II  
Oil and acrylic on canvas, 2011  
60 cm x 60 cm  
£1875

+44 (0) 7958 608 968

[artist@matthewwebber.co.uk](mailto:artist@matthewwebber.co.uk)

[www.matthewwebber.uk](http://www.matthewwebber.uk)





Stream II  
Acrylic on canvas, 2012  
56 cm x 56 cm  
£1700 (unframed)

+44 (0) 7958 608 968

[artist@matthewwebber.co.uk](mailto:artist@matthewwebber.co.uk)

[www.matthewwebber.uk](http://www.matthewwebber.uk)





Nightfall  
Oil and acrylic on canvas, 2019  
34 cm x 24 cm  
£850

+44 (0) 7958 608 968  
[artist@matthewwebber.co.uk](mailto:artist@matthewwebber.co.uk)  
[www.matthewwebber.uk](http://www.matthewwebber.uk)



## Matthew and his work

Matthew Webber's work is inspired by the collision of natural and urban landscapes, often influenced directly by the areas of Epping Forest which surround his East London studio.

His technique is an unusual one, in which multiple layers of oil and acrylic are methodically applied over a period of months or sometimes years, creating a dense block of imagery and paint, which is subsequently scraped and sanded away. This reversal of the process (which he calls 'unpainting') creates new connections and relationships, as each stage of the making reveals itself - all the way back to the very first mark.

This is when the method of making these works resembles sculpture or carving more than painting. Long-buried colours and structures emerge through the now mirror-smooth surface, creating an intricately interwoven network of lines and motifs in which both the city and the woodland landscape in which the work had its origin seem to manifest themselves.

At this stage the multiple layers of accumulated paint will either coalesce to form a finished work of art, or disappear completely, to be started again from scratch.

Matthew has been producing work in his East London studio for more than 20 years, exhibiting his paintings throughout the UK and the United States. For a detailed CV and more information, please visit his website or find him on Instagram.



Photograph © Jamie Stoker



+44 (0) 7958 608 968

[artist@matthewwebber.co.uk](mailto:artist@matthewwebber.co.uk)

[www.matthewwebber.uk](http://www.matthewwebber.uk)



## Selected Exhibitions

October 2023	The Other Art Fair, The Truman Brewery, London E1
July 2023	'Painting & Unpainting' solo exhibition, The View Gallery, London E4
June 2022	M2 Artists, Group exhibition at ASC Gallery, London SE17
June 2019	Creekside Open 2019 Selected by Sacha Craddock
May 2018	'm2@15', Group exhibition with m2 Gallery at APT Gallery, Deptford, London SE8
January 2017	Solo exhibition at Space Station Gallery, Bermondsey, London SE1
June 2016	Solo exhibition at m2 Gallery, Peckham, London SE15
December 2015	'Canopy' solo exhibition at The View Gallery, London E4
June 2015	Creekside Open 2015 Selected by Richard Deacon (Prizewinner)
September 2014	The National Open Art Competition, Somerset House, London WC2
Summer 2014	'Painting & Unpainting' solo exhibition, The Broadgate Tower, London EC2
January 2013	Miami International Art Fair, Miami, Florida
November 2012	'Aerial' solo exhibition, Red Bull UK Project Space, SE1
November 2012	'Discerning Eye' Group exhibition at The Mall Galleries, SW1
April 2012	'Somewhere', group exhibition, Clerkenwell, London EC1
April 2012	AAF NYC, Christopher Walker Art, New York City, USA
January 2012	Art Palm Beach, Christopher Walker Art, Palm Beach, USA
June 2011	Royal Academy of Arts, Summer Exhibition 2011, London W1
November 2008	The National Open Art Competition, Chichester
October 2006	Solo exhibition at La Viande Gallery, Shoreditch EC2
November 2005	'Discerning Eye' Group exhibition at The Mall Galleries, SW1
November 2004	'Discerning Eye' Group exhibition at The Mall Galleries, SW1
October 2002	Solo exhibition of 20 paintings at Harvey Nichols, SW1
April 1998	Solo exhibition at E1 Gallery, Spitalfields E1



+44 (0) 7958 608 968

[artist@matthewwebber.co.uk](mailto:artist@matthewwebber.co.uk)

[www.matthewwebber.uk](http://www.matthewwebber.uk)